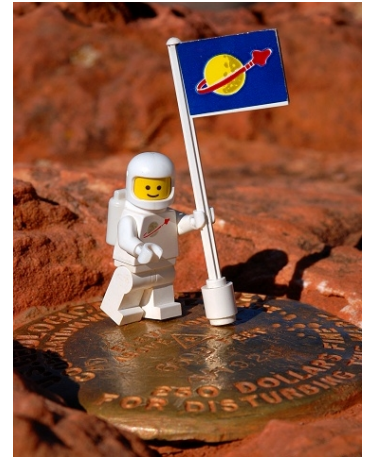
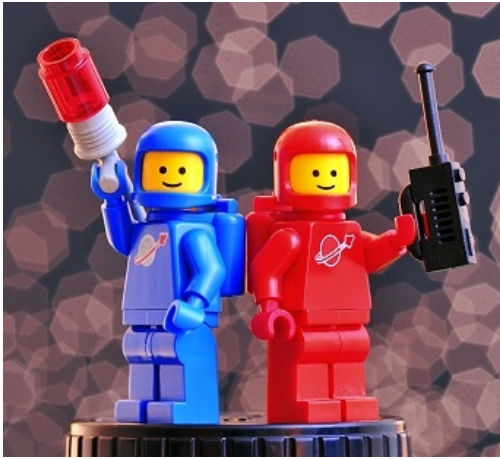
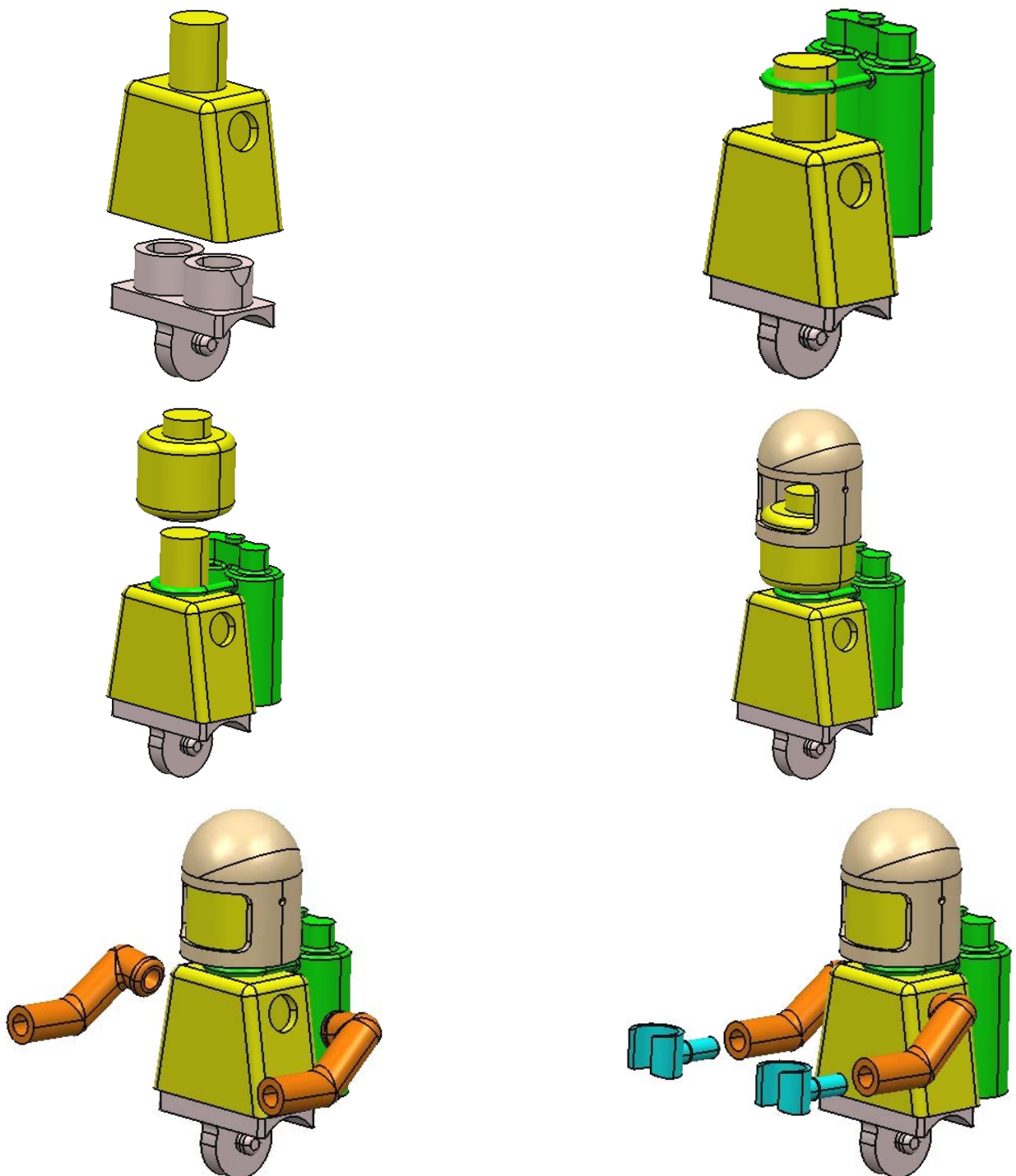
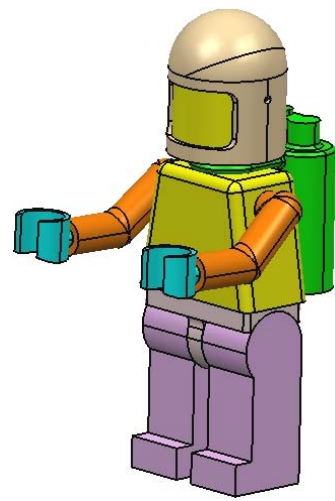
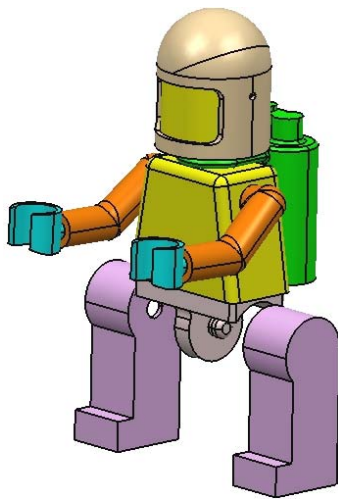


# LEGO Man

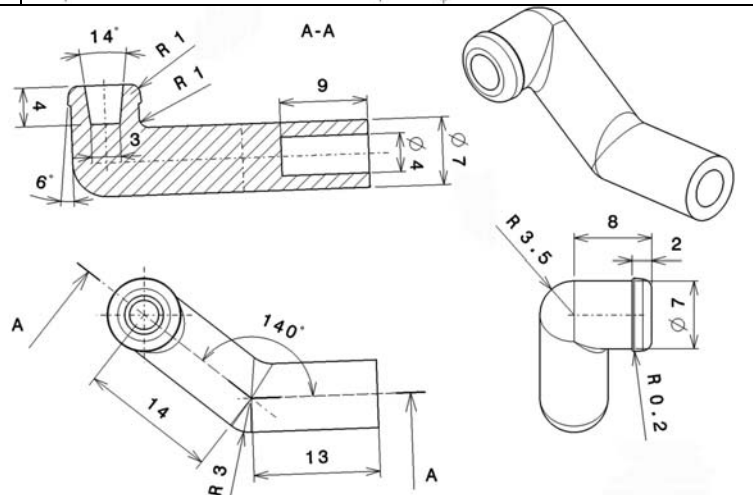
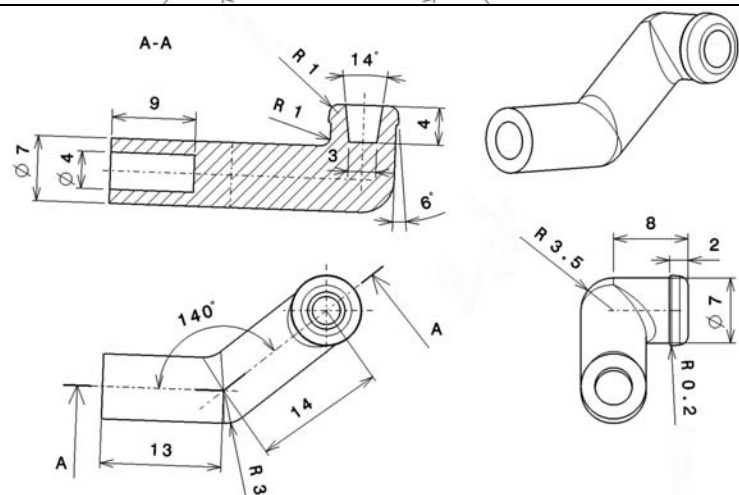
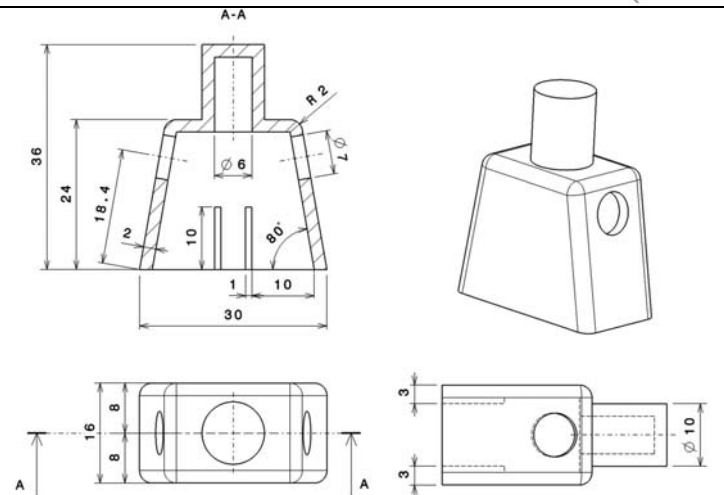
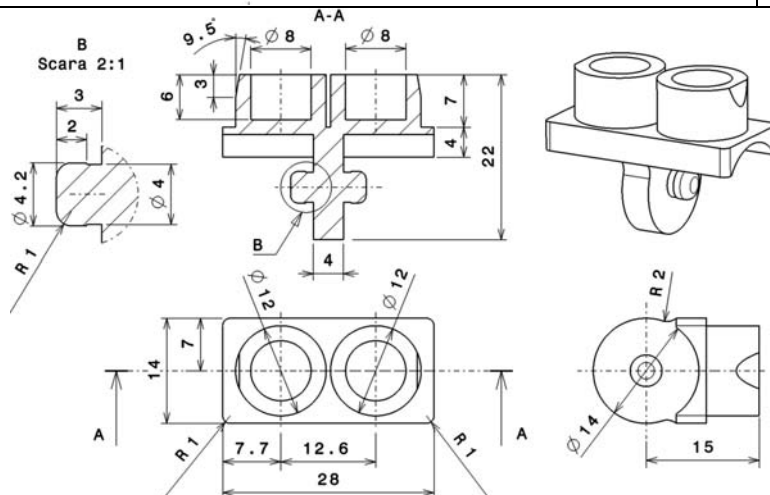
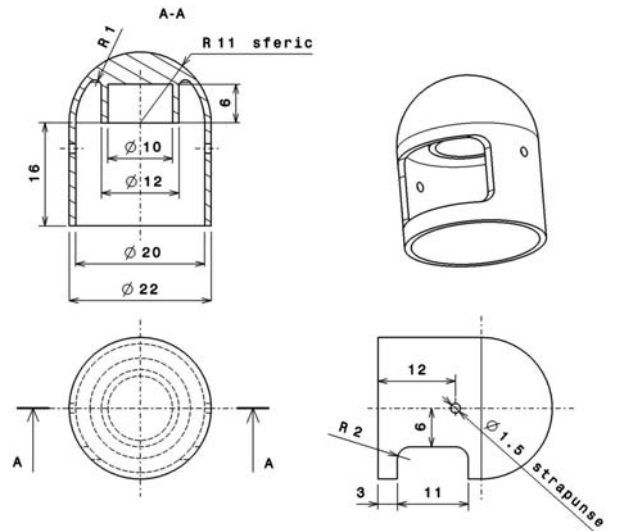
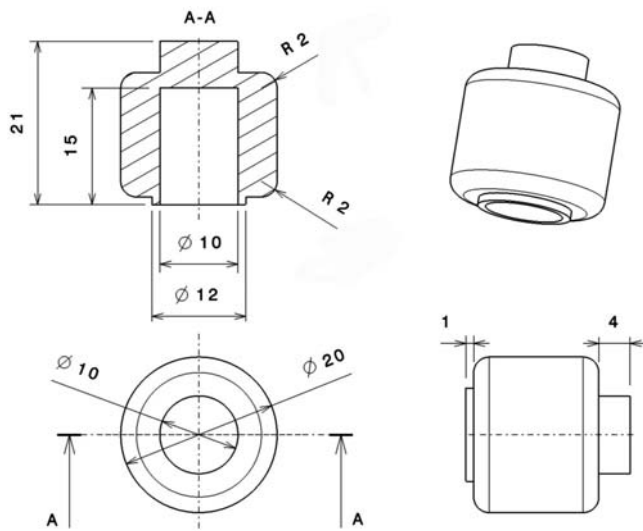


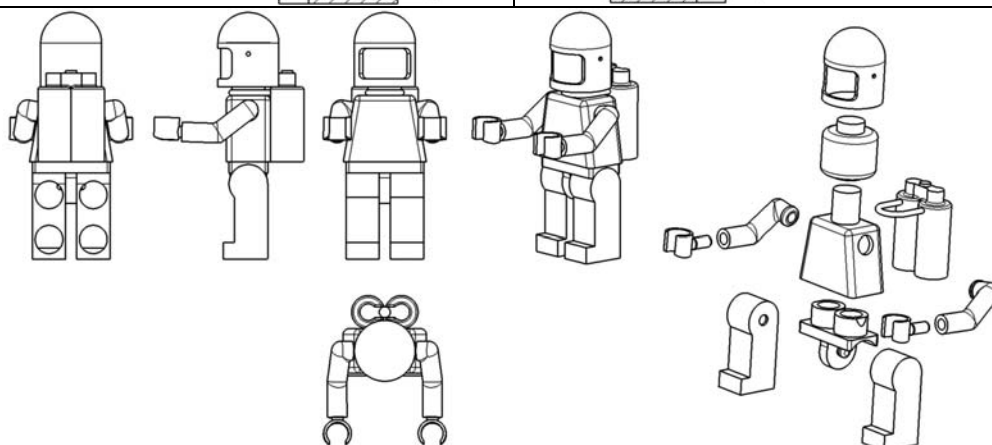
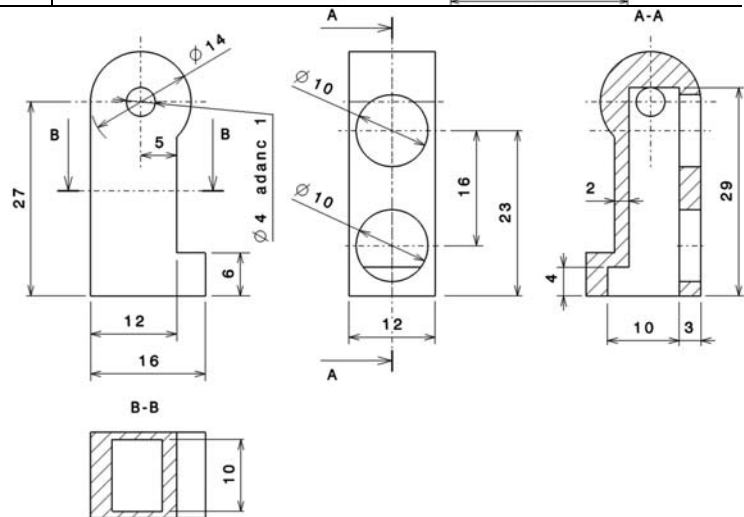
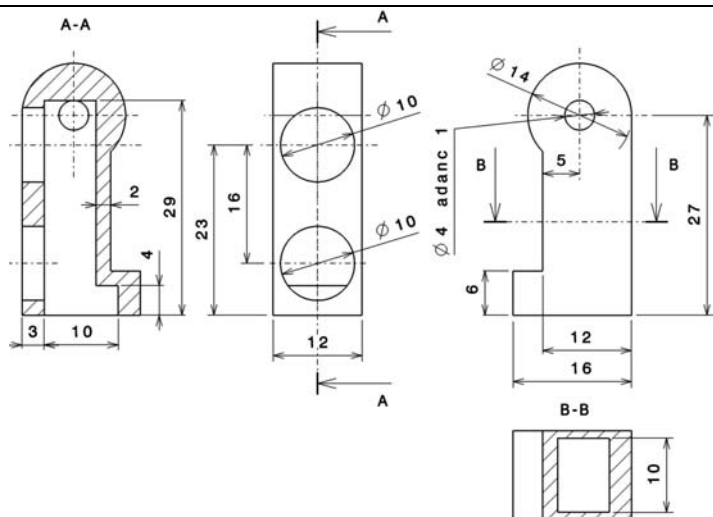
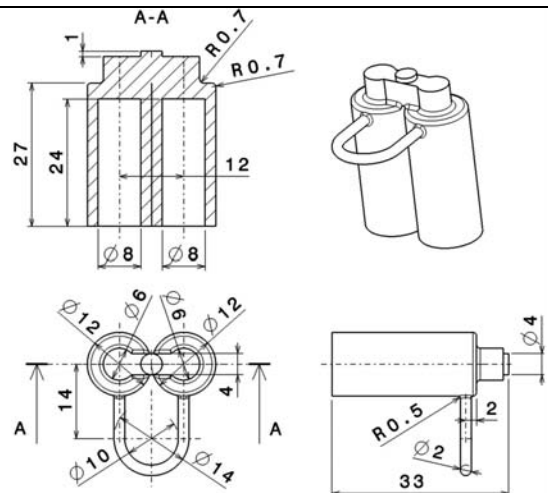
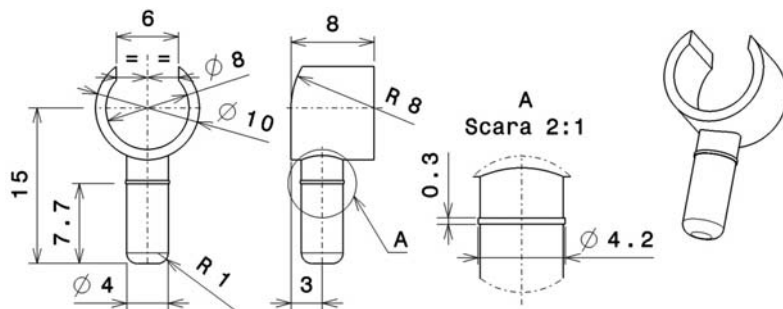
How to assembly the *Lego Man* using CATIA (main steps):





The parts are attached in the *STP* format. To model the parts, please use the following drawings (*metric*):





The parts and the assembly are made in CATIA v5 using a real toy *LEGO Man*.  
The purpose of this model is educational, for students to learn the *Assembly Design* module of CATIA.



Phd. Eng. Ionuț Gabriel GHIONEA  
CATIA Certified Professional.  
CATIA V5R14 Part Design Specialist  
Lecturer at the University Politehnica of Bucharest  
[www.ghionea.ro](http://www.ghionea.ro)



CATIA is Dassault Systèmes Pioneer Brand and the World's leading solution for Product Design and Innovation. Several thousands of companies in multiple industries Worldwide have already chosen the Virtual Design capabilities of [CATIA products](http://www.catia.com) to ensure their products Real Success. CATIA delivers [solutions](http://www.catia.com) for the enterprise from large OEMs through their supply chains to Small and Medium Businesses.

Distributor for CATIA in Romania: [www.magic-engineering.ro](http://www.magic-engineering.ro)

Books on CATIA: [www.catia.ro](http://www.catia.ro)

Links: [www.lego.com](http://www.lego.com)

[www.3ds.com](http://www.3ds.com)

[www.catia.com](http://www.catia.com)